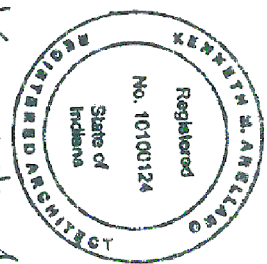
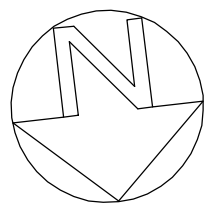

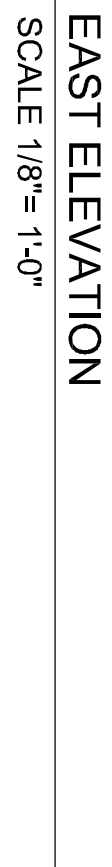



FLOOR PLAN
SCALE 1/8"=1'-0"

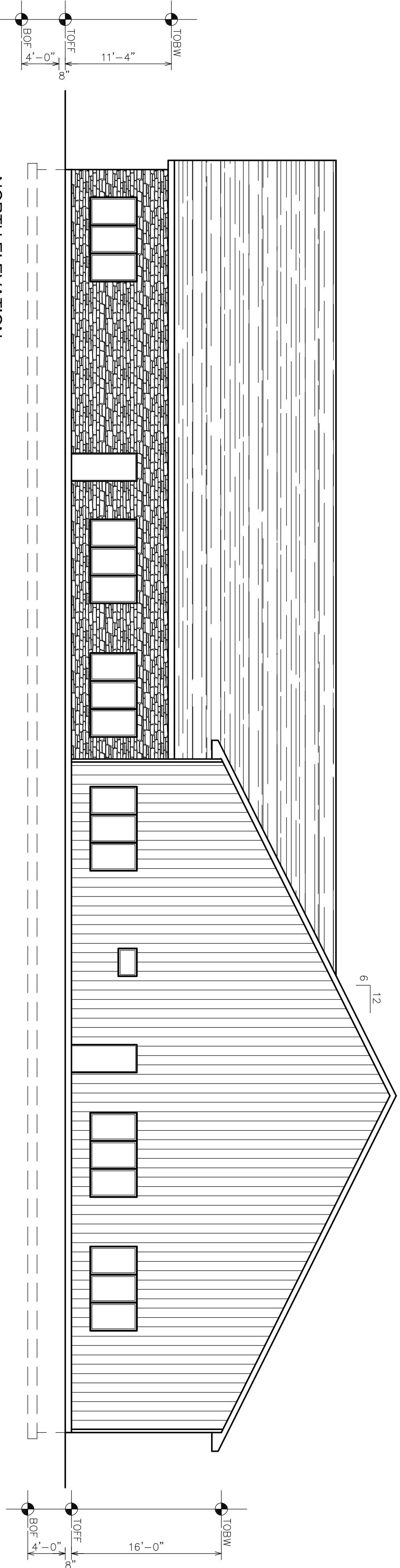


Kenneth Munguia Arellano

| | | | | |
|--|--|--|-------------------|--|
|  KENNETH MUNGUIA ARELLANO ARCHITECT 5610 WOLBERT AVENUE, PORTAGE IN 46368 (219) 763 6794 | | | PROJECT TITLE | |
| C&S BUILDING 7329 MCCONNELL AVENUE MCCONNELL PLAZA LAKE COUNTY, INDIANA | | | DRAWN | |
| SCALE 1/8"=1'-0" | | | KMA | |
| DATE MAR 07 2025 | | | FLOOR PLAN | |
| | | | SHEET 2 | |

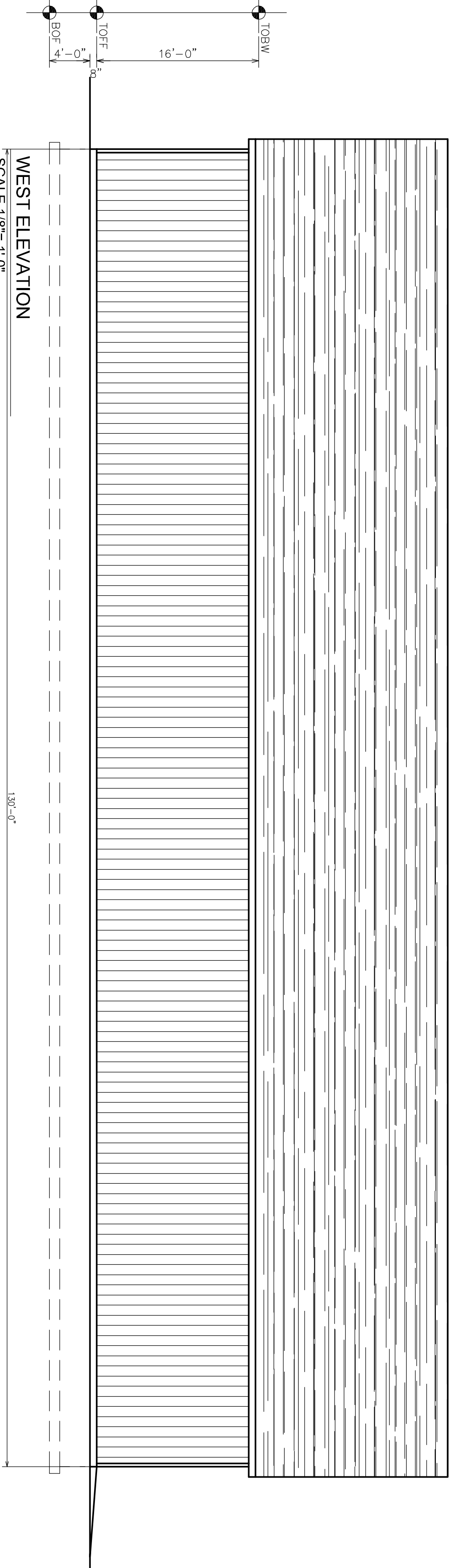


| | | |
|---|-----------------------------------|------------|
|  | | |
| KENNETH MUNGUJA ARELLANO ARCHITECT 5610 MULBERRY AVENUE, PORTAGE IN 46368 (219) 763 6794 | | |
| PROJECT TITLE | | |
| C&S BUILDING 7359 MCCONNELL AVENUE MCCONNELL PLAZA LAKE COUNTY, INDIANA | | |
| SCALE 1/8" = 1' - 0" | DRAWN KMA | SHEET 3 |
| DATE MAR 07 2025 | SOUTH ELEVATION EAST ELEVATION | |



NORTH ELEVATION

SCALE 1/8" = 1'-0"



WEST ELEVATION

SCALE 1/8" = 1'-0"



Kenneth W. Arellano

KENNETH MUNGUIA ARELLANO

ARCHITECT

5610 MULBERRY AVENUE, PORTAGE IN 46368 (219) 763 6794

C&S BUILDING

7329 MCCONNELL AVENUE MCCONNELL PLAZA LAKE COUNTY, INDIANA

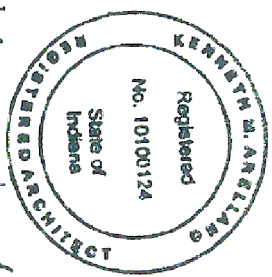
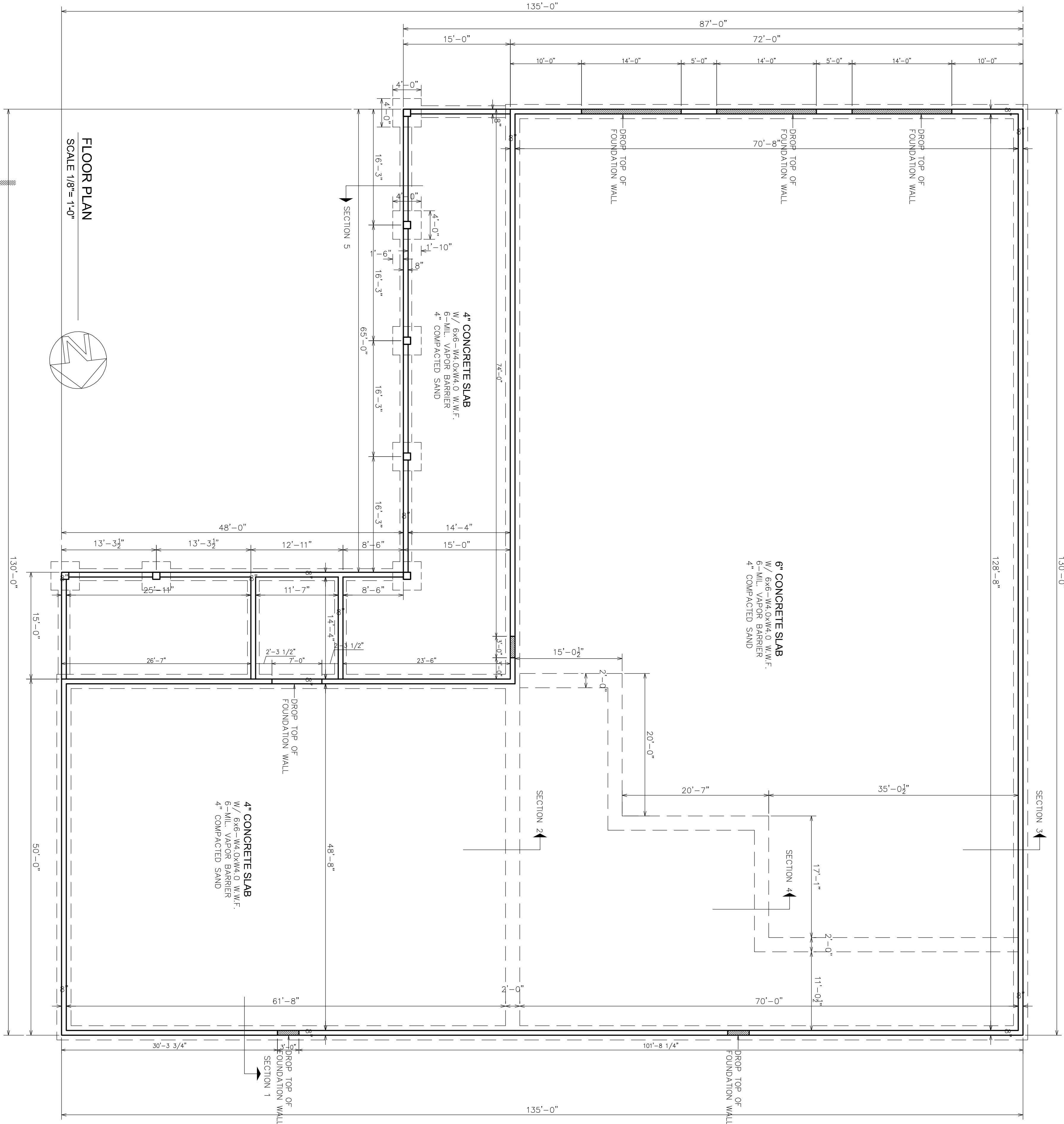
SCALE
1/8"=1'-0"

DRAWN
KMA


NORTH ELEVATION
WEST ELEVATION

DATE
MAR 07 2025

SHEET
4



Kenneth Munguia Arellano

| | | | | |
|---|---------------------|--------------|---|------------|
|  KENNETH MUNGUIA ARELLANO ARCHITECT 5610 WULBERTY AVENUE, PORTAGE IN 46368 (219) 763 6794 | | | C&S BUILDING 7529 MCCONNELL AVENUE MCCONNELL PLAZA LAKE COUNTY, INDIANA | |
| PROJECT TITLE | SCALE 1/8"=1'-0" | DRAWN KMA | FLOOR PLAN | |
| DATE MAR 07 2025 | | | | SHEET 5 |

2X2 LIGHT FIXT CEILING MOUNTED

2X4 LIGHT FIXT CEILING MOUNTED INDOOR COMMERCIAL

WALL MOUNTED LIGHT FIXTURE

CEILING MOUNTED LIGHT FIXTURE (RECESSED)

EXIT SIGN

TRACK LIGHT FIXTURE

EMERGENCY LIGHT

EXH FAN/LIGHT

RECEPTACLE 20 AMP-125 VOLT DUPLEX (16")

RECEPTACLE GROUND FAULT INTERRUPT 20AMP-125 V DUP (42") SWITCH

THREE WAY SWITCH

PANEL

1) ALL WORK TO BE DONE IN ACCORDANCE WITH THE LATEST REQUIREMENTS OF THE LATEST EDITION NATIONAL ELECTRICAL CODE AND ALL OTHER APPLICABLE STATE AND LOCAL CODES AND REGULATIONS.

2) VERIFY ALL ELECTRICAL REQUIREMENTS WITH OWNER PRIOR TO ROUGH-IN.

3) NOTED HEIGHTS ARE TO THE BOTTOM OF THE FIXTURE, EQUIPMENT, DEVICE, ETC. EXCEPT WHEN SPECIFICALLY NOTED. ROUGH-IN HEIGHTS AND LOCATIONS SHALL BE COORDINATED WITH UNIT DIMENSIONS AND ADJACENT CASEWORK. GENERAL CONSTRUCTION, COORDINATE WORK WITH OTHER TRADES AND THE OWNER.

4) LIGHTING FIXTURES ARE TO BE LOCATED AS REQUIRED AS REQUIRED ON THE JOB TO CLEAR DUCTS, PIPING AND MECHANICAL EQUIPMENT.

5) ALL MATERIALS AND EQUIPMENT SHALL BE NEW APPROVED BY U.L. OR APPROVED EQUAL. GROUNDING SHALL BE DONE PER (NEC) NATIONAL ELECTRICAL CODE AND STATE AND LOCAL CODE REQUIREMENTS.

ELECTRIC RISER DIAGRAM

KENNETH M. ARELLANO

REGISTERED ARCHITECT

No. 1000124

State of Indiana

7529 MCCONNELL AVENUE, PORTAGE IN 46368

(219) 763 6794

KENNETH M. ARELLANO

ARCHITECT

5610 MULBERRY AVENUE, PORTAGE IN 46368

(219) 763 6794

C&S BUILDING

7529 MCCONNELL AVENUE MCCONNELL PLAZA LAKE COUNTY, INDIANA

7529 MCCONNELL AVENUE MCCONNELL PLAZA LAKE COUNTY, INDIANA

SCALE

1/8"=1'-0"

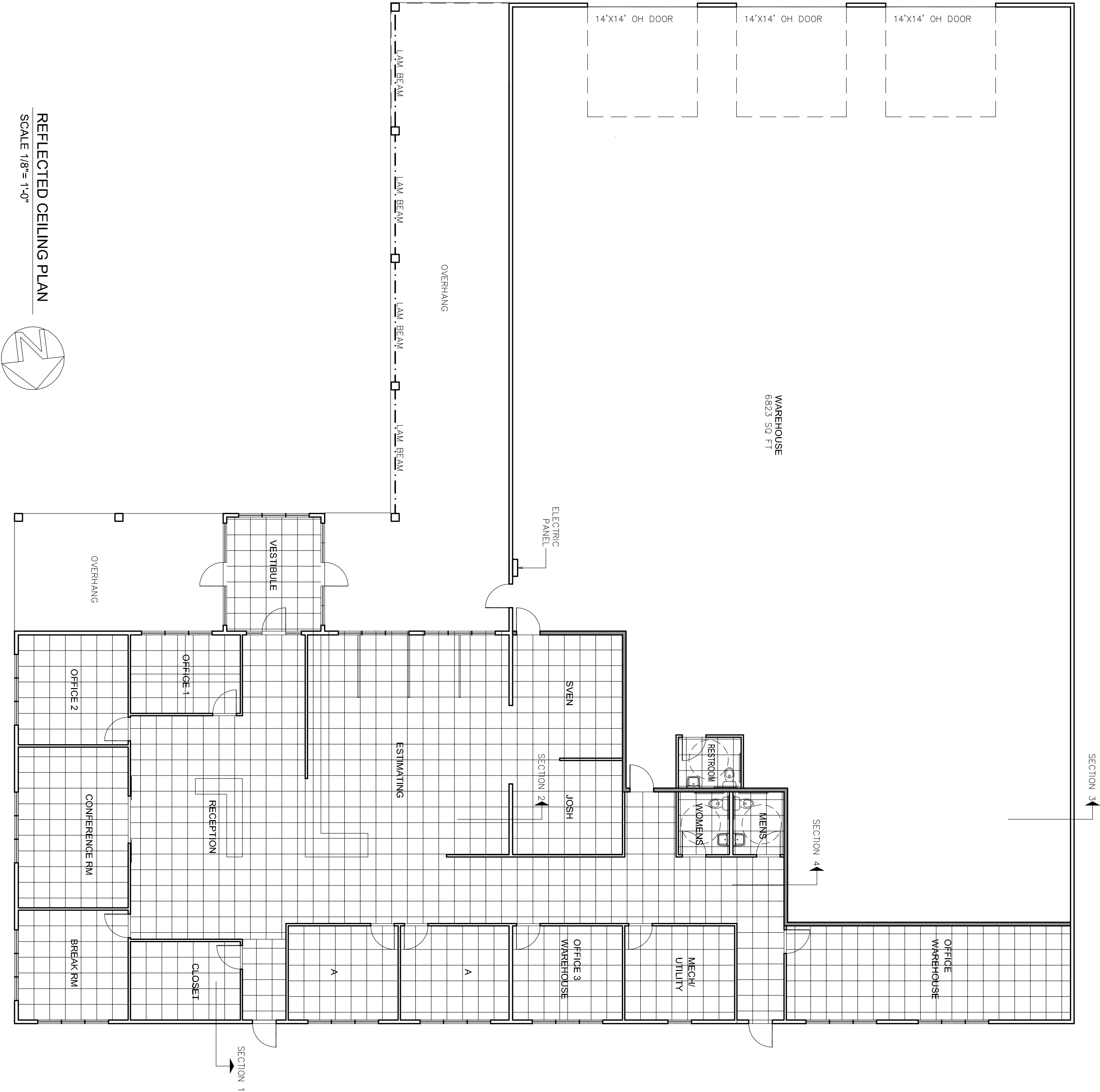
DATE

MAR 07 2025

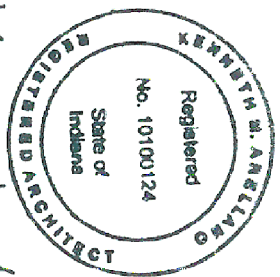
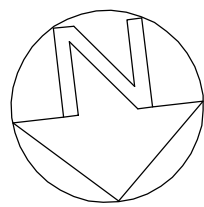
SHEET

6


ELECTRICAL PLAN



REFLECTED CEILING PLAN
SCALE 1/8"=1'-0"



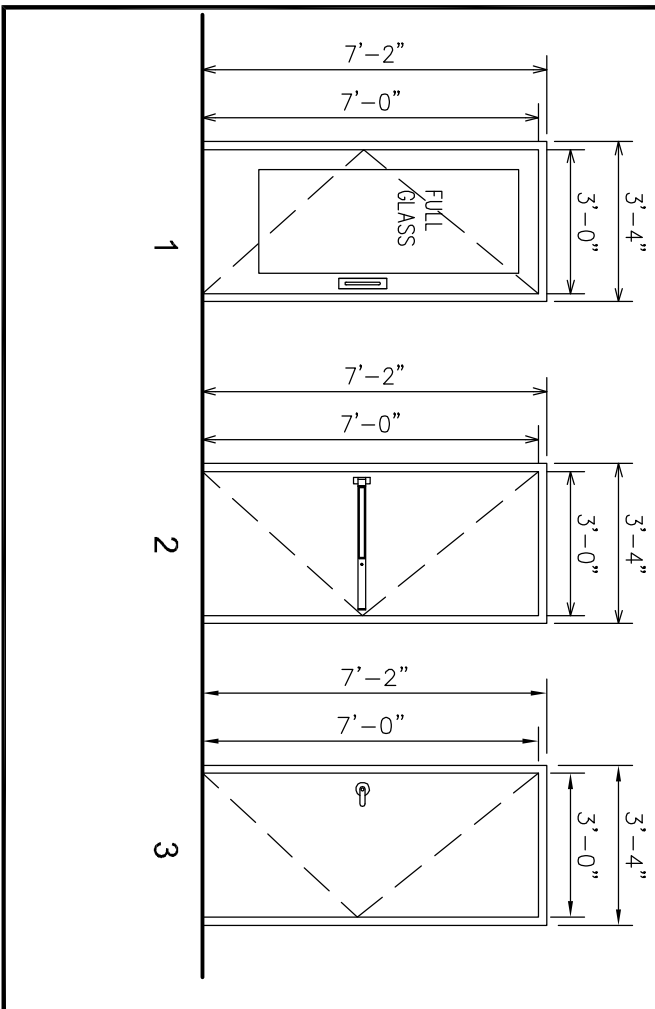
Kenneth Munguia Arellano

| | | | | | | | |
|---|-------|------------|--|---|--|--|--|
| <div><div><div><div><div></div><div>TBA</div></div></div><div><div><div><div><div>KENNETH MUNGUIA ARELLANO</div><div>ARCHITECT</div><div>5610 MULBERRY AVENUE, PORTAGE IN 46368</div><div>(219) 763 6794</div></div></div></div></div></div></div> | | | PROJECT TITLE | | | | |
| C&S BUILDING | | | 7329 MCCONNELL AVENUE MCCONNELL PLAZA LAKE COUNTY, INDIANA | | | | |
| SCALE | DRAWN | SHEET | | | | | |
| 1/8"=1'-0" | KMA | FLOOR PLAN | | | | | |
| DATE | | | | | | | |
| MAR 07 2025 | | | | 7 | | | |

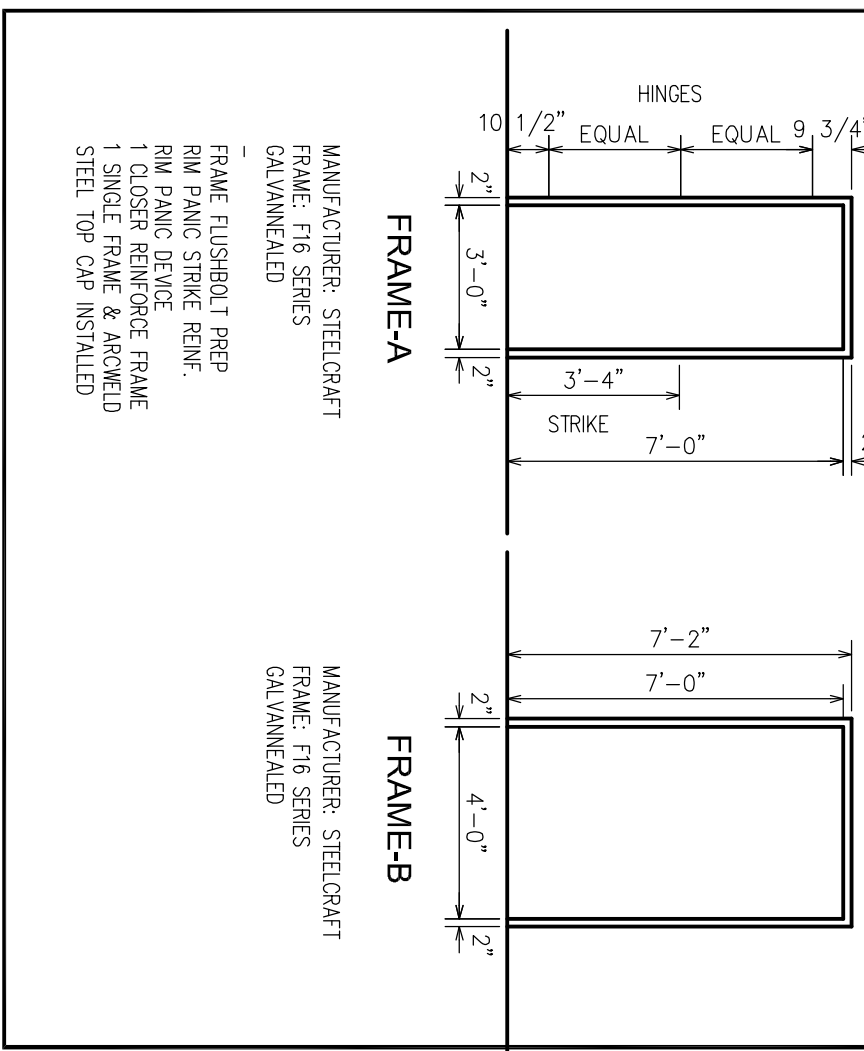
DOOR, FRAME AND HARDWARE SCHEDULE

| ⑩ | DOOR | | | | FRAME | | | HARDWARE SET | RATING | REMARKS | | | | |
|----|------------|-------|--------|------|-----------|----------|---|------------------|--------|-------------|-------|------|--|-----|
| | NO. | SIZE | | | ELEVATION | MATERIAL | FINISH | | | | | | | |
| | | WIDTH | HEIGHT | THK. | | | | | | | | | | |
| 1 | 3'-0" | 7'-0" | 1-3/4" | 1 | STEEL | PAINT | MANUFACTURER & CATALOG I.D. | A | HL | PAINT | 1 | — | MIL SPEC (SEE DOOR ELEVATION 1) | |
| 2 | 3'-0" | 7'-0" | 1-3/4" | 1 | STEEL | PAINT | | STEELDOOR L-16-B | A | HL | PAINT | 1 | | — |
| 3 | 3'-0" | 7'-0" | 1-3/4" | 1 | STEEL | PAINT | | STEELDOOR L-16-B | A | HL | PAINT | 1 | | — |
| 4 | 3'-0" | 7'-0" | 1-3/4" | 2 | STEEL | PAINT | | STEELDOOR L-16-B | A | HL | PAINT | 2 | | 4XL |
| 5 | 3'-0" | 7'-0" | 1-3/4" | 2 | STEEL | PAINT | STEELDOOR L-16-B | A | HL | PAINT | 2 | 4XL | INDUSTRIAL, HEAVY DUTY BIG WHEEL SLIDING HARDWARE | |
| 6 | 3'-0" | 7'-0" | 1-3/4" | 3 | WOOD | POLY | WASHFIELD PATIOCEBOARD CORE DOOR (GPR-20) | A | HL | PREFINISHED | 3 | 20XL | | |
| 7 | 3'-0" | 7'-0" | 1-3/4" | 3 | WOOD | POLY | WASHFIELD PATIOCEBOARD CORE DOOR (GPR-20) | A | HL | PREFINISHED | 3 | 20XL | | |
| 8 | 3'-0" | 7'-0" | 1-3/4" | 3 | WOOD | POLY | WASHFIELD PATIOCEBOARD CORE DOOR (GPR-20) | A | HL | PREFINISHED | 5 | 20XL | | |
| 9 | 3'-0" | 7'-0" | 1-3/4" | 3 | WOOD | POLY | WASHFIELD PATIOCEBOARD CORE DOOR (GPR-20) | A | HL | PREFINISHED | 4 | 20XL | | |
| 10 | 3'-0" | 7'-0" | 1-3/4" | 3 | WOOD | POLY | WASHFIELD PATIOCEBOARD CORE DOOR (GPR-20) | A | HL | PREFINISHED | 5 | 20XL | | |
| 11 | 3'-0" | 7'-0" | 1-3/4" | 3 | WOOD | POLY | WASHFIELD PATIOCEBOARD CORE DOOR (GPR-20) | A | HL | PREFINISHED | 5 | 20XL | | |
| 12 | 3'-0" | 7'-0" | 1-3/4" | 3 | WOOD | POLY | WASHFIELD PATIOCEBOARD CORE DOOR (GPR-20) | A | HL | PREFINISHED | 5 | 20XL | | |
| 13 | 3'-0" | 7'-0" | 1-3/4" | 3 | WOOD | POLY | WASHFIELD PATIOCEBOARD CORE DOOR (GPR-20) | A | HL | PREFINISHED | 5 | 20XL | | |
| 14 | 3'-0" | 7'-0" | 1-3/4" | 3 | WOOD | POLY | WASHFIELD PATIOCEBOARD CORE DOOR (GPR-20) | A | HL | PREFINISHED | 5 | 20XL | | |
| 15 | 3'-0" | 7'-0" | 1-3/4" | 3 | WOOD | POLY | WASHFIELD PATIOCEBOARD CORE DOOR (GPR-20) | A | HL | PREFINISHED | 5 | 20XL | | |
| 16 | 3'-0" | 7'-0" | 1-3/4" | 3 | WOOD | POLY | WASHFIELD PATIOCEBOARD CORE DOOR (GPR-20) | A | HL | PREFINISHED | 5 | 20XL | | |
| 17 | 3'-0" | 7'-0" | 1-3/4" | 2 | STEEL | PAINT | STEELDOOR L-16-B | A | HL | PAINT | 2 | 4XL | | |
| 18 | 3'-0" | 7'-0" | 1-3/4" | 2 | STEEL | PAINT | STEELDOOR L-16-B | A | HL | PAINT | 2 | 4XL | | |
| 19 | 3'-0" | 7'-0" | 1-3/4" | 2 | STEEL | PAINT | STEELDOOR L-16-B | A | HL | PAINT | 2 | 4XL | | |
| 20 | REL. 3'-0" | | 1-3/4" | | POLY | POLY | WASHFIELD PATIOCEBOARD CORE DOOR (GPR-20) | | | | | | | |
| 21 | 3'-0" | 7'-0" | 1-3/4" | 3 | WOOD | POLY | WASHFIELD PATIOCEBOARD CORE DOOR (GPR-20) | A | HL | PREFINISHED | 3 | 20XL | | |

DOOR ELEVATION



DOOR FRAME



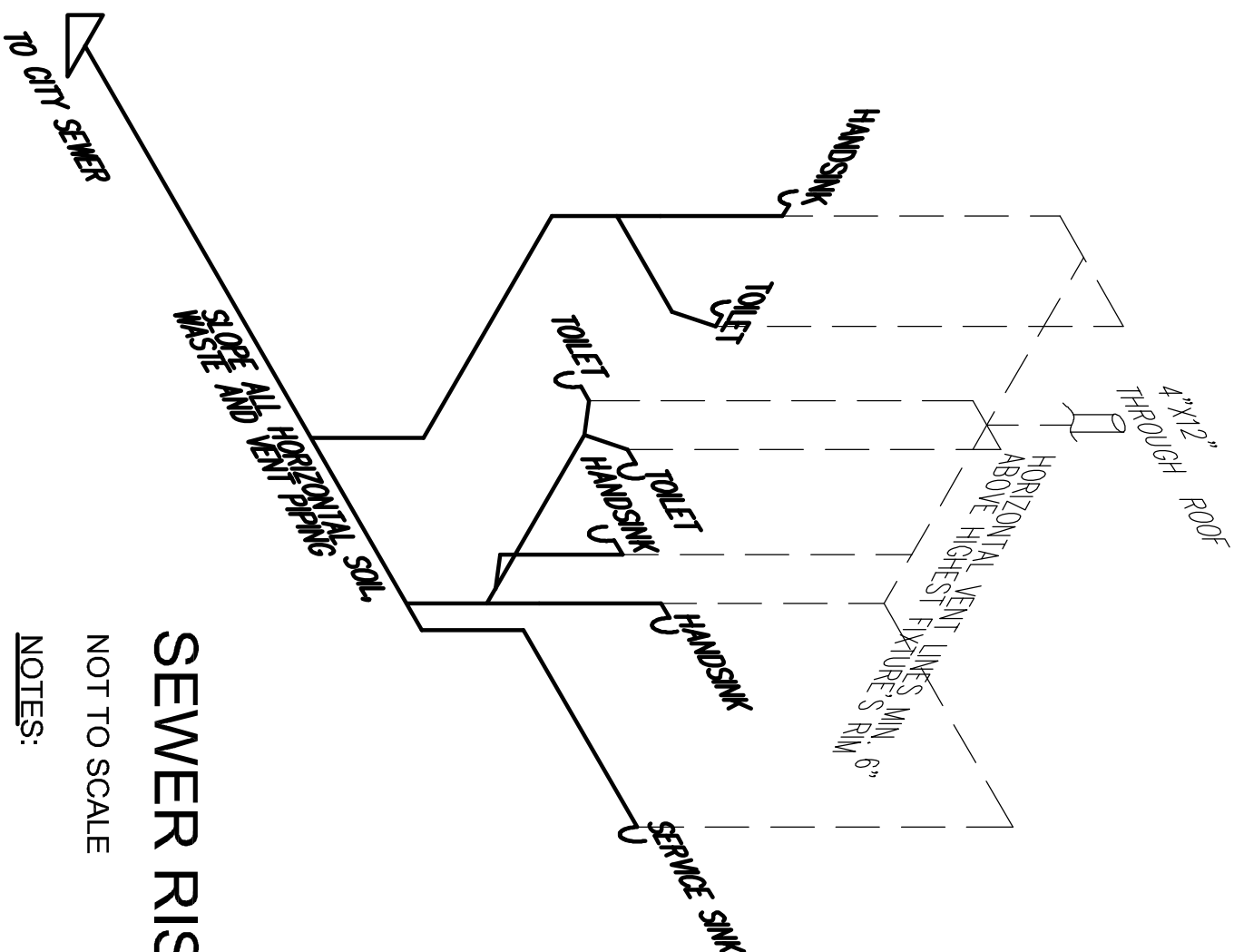
DOOR HARDWARE

[illegible]

ROOM FINISH SCHEDULE

[illegible]

Roof 2' x 12'



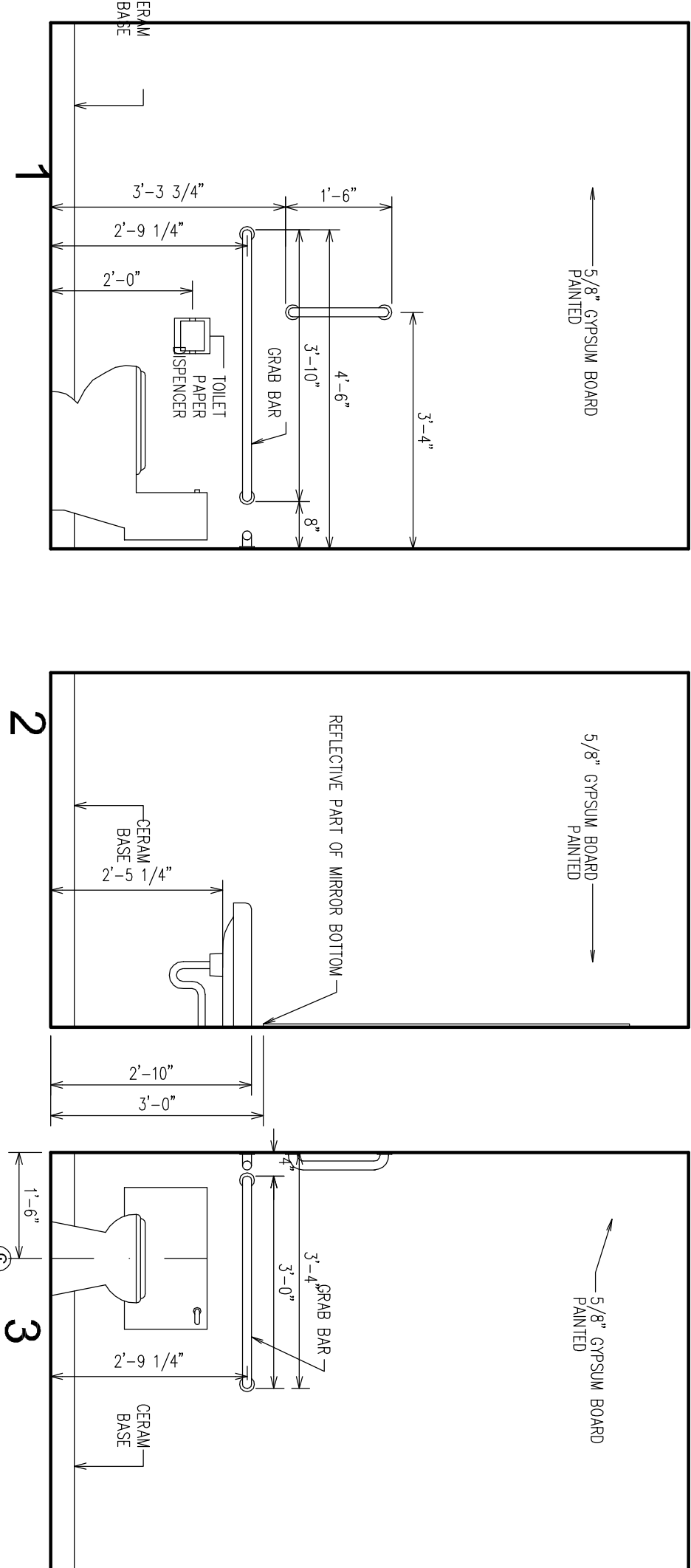
SEWER RISER DIAGRAM

NOT TO SCALE

NOTES:

- 1) SEWER AND VENT PIPE PLUMBING AND PIPING: LAYOUT IS APPROXIMATE
- 2) PLUMBING FIXTURES AND PIPING LAYOUT IS APPROXIMATE
- 3) CONTRACTOR SHALL INSTALL EQUIPMENT AND PIPING TO MEET FEE CONDITIONS
- 4) INSTALLATION OF ALL PLUMBING PIPING, FIXTURES, ETC., SHALL CONFORM TO ALL STATE AND LOCAL CODES
- 5) TRENCH AND INSTALL STOP VALVES AT ALL PROPOSED SINK, DRINK, AND HOT WATER FIXTURES AND ALL SINK, DRINK, AND HOT WATER FIXTURES AND ALL
- 6) COAST OF THE STATE AND CHARGES
- 7) COAST OF THE STATE AND CHARGES
- 8) COAST OF THE STATE AND CHARGES
- 9) COAST OF THE STATE AND CHARGES
- 10) COAST OF THE STATE AND CHARGES
- 11) COAST OF THE STATE AND CHARGES
- 12) COAST OF THE STATE AND CHARGES
- 13) COAST OF THE STATE AND CHARGES
- 14) COAST OF THE STATE AND CHARGES
- 15) COAST OF THE STATE AND CHARGES
- 16) COAST OF THE STATE AND CHARGES
- 17) COAST OF THE STATE AND CHARGES
- 18) COAST OF THE STATE AND CHARGES
- 19) COAST OF THE STATE AND CHARGES
- 20) COAST OF THE STATE AND CHARGES
- 21) COAST OF THE STATE AND CHARGES
- 22) COAST OF THE STATE AND CHARGES
- 23) COAST OF THE STATE AND CHARGES
- 24) COAST OF THE STATE AND CHARGES
- 25) COAST OF THE STATE AND CHARGES
- 26) COAST OF THE STATE AND CHARGES
- 27) COAST OF THE STATE AND CHARGES
- 28) COAST OF THE STATE AND CHARGES
- 29) COAST OF THE STATE AND CHARGES
- 30) COAST OF THE STATE AND CHARGES
- 31) COAST OF THE STATE AND CHARGES
- 32) COAST OF THE STATE AND CHARGES
- 33) COAST OF THE STATE AND CHARGES
- 34) COAST OF THE STATE AND CHARGES
- 35) COAST OF THE STATE AND CHARGES
- 36) COAST OF THE STATE AND CHARGES
- 37) COAST OF THE STATE AND CHARGES
- 38) COAST OF THE STATE AND CHARGES
- 39) COAST OF THE STATE AND CHARGES
- 40) COAST OF THE STATE AND CHARGES
- 41) COAST OF THE STATE AND CHARGES
- 42) COAST OF THE STATE AND CHARGES
- 43) COAST OF THE STATE AND CHARGES
- 44) COAST OF THE STATE AND CHARGES
- 45) COAST OF THE STATE AND CHARGES
- 46) COAST OF THE STATE AND CHARGES
- 47) COAST OF THE STATE AND CHARGES
- 48) COAST OF THE STATE AND CHARGES
- 49) COAST OF THE STATE AND CHARGES
- 50) COAST OF THE STATE AND CHARGES
- 51) COAST OF THE STATE AND CHARGES
- 52) COAST OF THE STATE AND CHARGES
- 53) COAST OF THE STATE AND CHARGES
- 54) COAST OF THE STATE AND CHARGES
- 55) COAST OF THE STATE AND CHARGES
- 56) COAST OF THE STATE AND CHARGES
- 57) COAST OF THE STATE AND CHARGES
- 58) COAST OF THE STATE AND CHARGES
- 59) COAST OF THE STATE AND CHARGES
- 60) COAST OF THE STATE AND CHARGES
- 61) COAST OF THE STATE AND CHARGES
- 62) COAST OF THE STATE AND CHARGES
- 63) COAST OF THE STATE AND CHARGES
- 64) COAST OF THE STATE AND CHARGES
- 65) COAST OF THE STATE AND CHARGES
- 66) COAST OF THE STATE AND CHARGES
- 67) COAST OF THE STATE AND CHARGES
- 68) COAST OF THE STATE AND CHARGES
- 69) COAST OF THE STATE AND CHARGES
- 70) COAST OF THE STATE AND CHARGES
- 71) COAST OF THE STATE AND CHARGES
- 72) COAST OF THE STATE AND CHARGES
- 73) COAST OF THE STATE AND CHARGES
- 74) COAST OF THE STATE AND CHARGES
- 75) COAST OF THE STATE AND CHARGES
- 76) COAST OF THE STATE AND CHARGES
- 77) COAST OF THE STATE AND CHARGES
- 78) COAST OF THE STATE AND CHARGES
- 79) COAST OF THE STATE AND CHARGES
- 80) COAST OF THE STATE AND CHARGES
- 81) COAST OF THE STATE AND CHARGES
- 82) COAST OF THE STATE AND CHARGES
- 83) COAST OF THE STATE AND CHARGES
- 84) COAST OF THE STATE AND CHARGES
- 85) COAST OF THE STATE AND CHARGES
- 86) COAST OF THE STATE AND CHARGES
- 87) COAST OF THE STATE AND CHARGES
- 88) COAST OF THE STATE AND CHARGES
- 89) COAST OF THE STATE AND CHARGES
- 90) COAST OF THE STATE AND CHARGES
- 91) COAST OF THE STATE AND CHARGES
- 92) COAST OF THE STATE AND CHARGES
- 93) COAST OF THE STATE AND CHARGES
- 94) COAST OF THE STATE AND CHARGES
- 95) COAST OF THE STATE AND CHARGES
- 96) COAST OF THE STATE AND CHARGES
- 97) COAST OF THE STATE AND CHARGES
- 98) COAST OF THE STATE AND CHARGES
- 99) COAST OF THE STATE AND CHARGES
- 100) COAST OF THE STATE AND CHARGES

RESTROOMS ELEVATIONS



KENNETH MUNGUIA ARELLANO

TBA

5610 MULBERRY AVENUE, PORTAGE IN 46368

(219) 763 6794

SUBJECT TITLE

C&S BUILDING

711

7329 MCCONN

COUNTY

MAR 07 2025

SHEET
8

